



Little River - 1921

John Agnew shares some insight into a fascinating photograph of an early Way and Works train

Back in October 2020, I received a couple of pictures in the mail from Colin Barry, showing two work trains in Canterbury in 1921. He had received these, along with the notebooks of the driver in the photos, Clarrie R Smith, who often worked on the Little River branch.

The above picture shows the complete consist at Little River, comprising of locomotive R 112, Ballast van F 5, and five different vintage lodging vans.

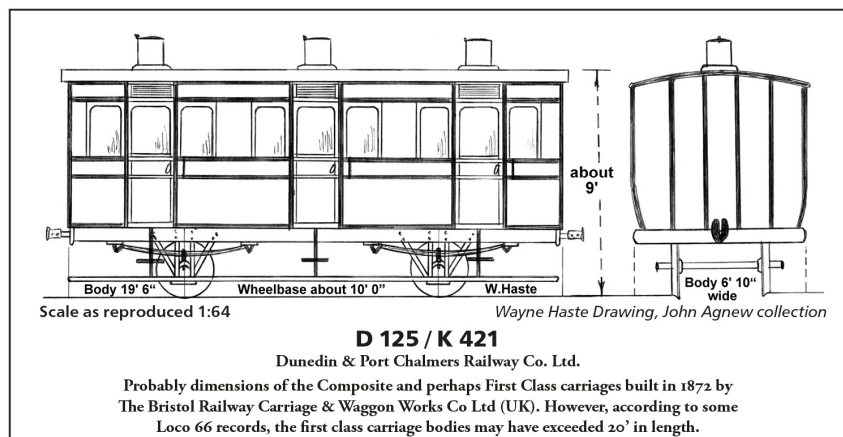
The second picture (overleaf) is thought to be taken earlier at Addington Workshops, and shows loco R 112 bunker first, coupled to two lodging vans and ballast van F 5.

These pictures really got me excited as no two cars were the same, and one was still externally obviously an 1872 Bristol UK built, three compartment cross seated car of the Dunedin and Port Chalmers Railway Co, an amazing sight to see over 49 years later.

Through photo enlargement I have been able to better establish the lodging vans provenance, details of which follow along with supplementary information:

F 5

A BP 123 20' long guards van which was fitted with a single ballast plough from F 63 in March 1904. It was written off eight years after this picture at Addington Workshops in late July 1929.



K 421

This car, ex the Dunedin & Port Chalmers Rly Co became the NZR's Dr25, then later Loco department lodging van K 421. Renumbered to E 794 on 16.10.1937, and then E 125 (again!) under the 1980 TMS system it was finally written off in June 1982 in Dunedin aged 110 years old!

K 638

Formerly D 46 built by the Oldbury Railway Car. Co. in the UK in 1874 and converted to a lodging van K 638 in 12.1900. Later reclassified E 809 in 1937 and renumbered into the TMS system as E 133 c.1980. It was written off in Christchurch June 1982 at 108 years old.

K 494

Formerly Brake Van F 54 built 1878-9. Converted to a lodging van on 14.9.1907. Renumbered E 796 in 3.1937, and written off at Invercargill June 1960.

K 578

Built new as a Sleeping van to BP 1873 of 20.1.1896, on the underframe of M 13. Renumbered E 848 2.3.1940 it was transferred to Greymouth 12.11.1958 and written off there on 15.8.1959.

Right: An engraving of a Dunedin & Port Chalmers Railway composite class car, which while similar to K 421, had a different window shape for the second class compartments.

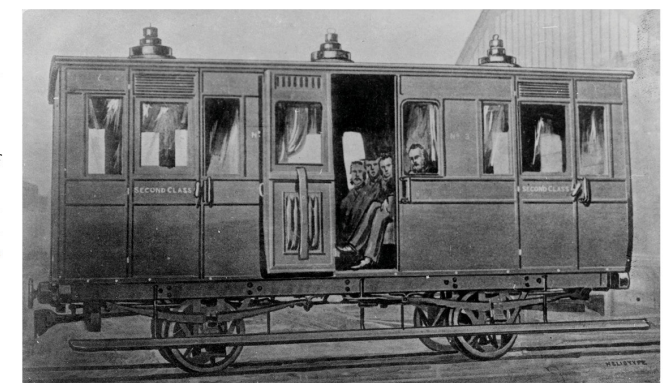
John Agnew collection

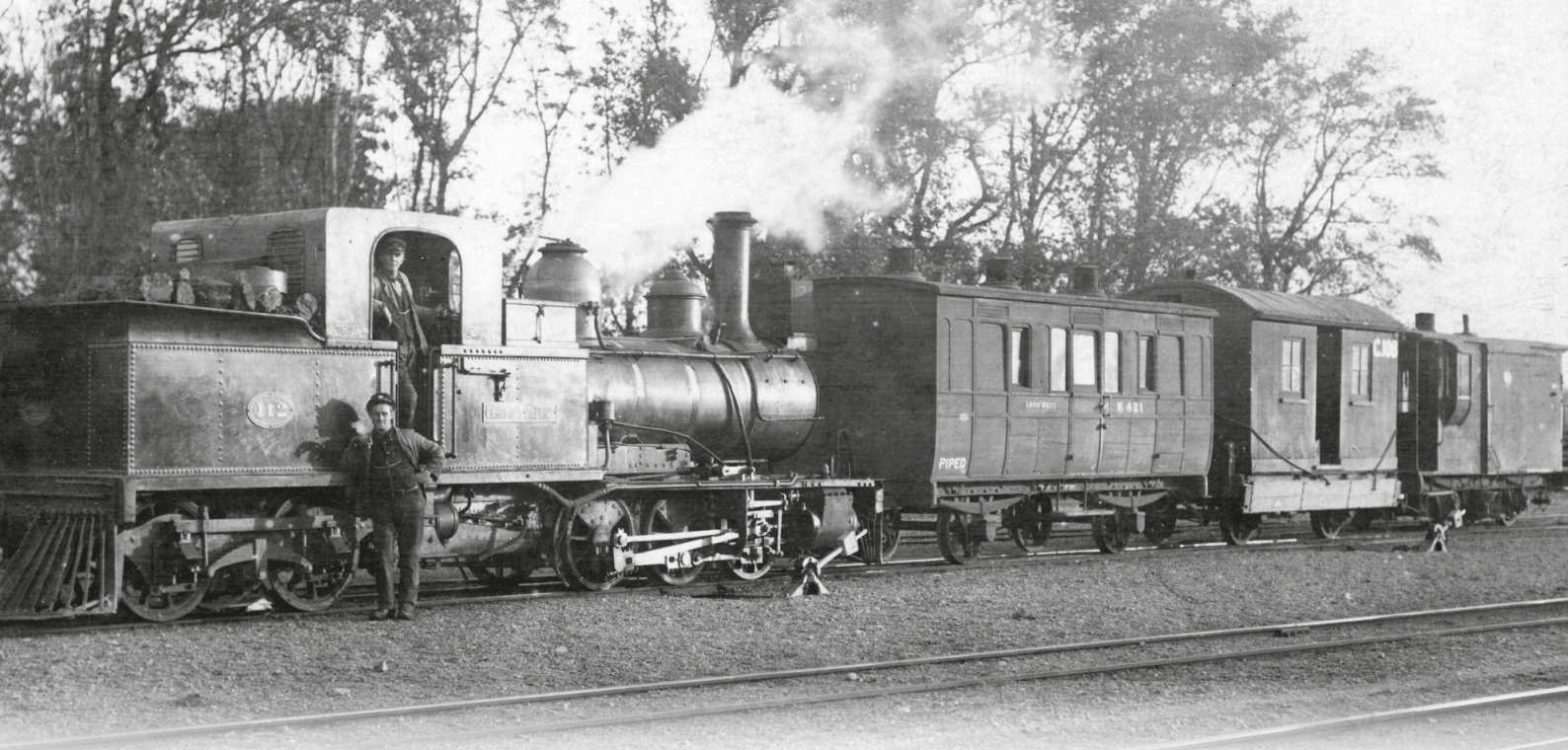


<http://nzrmg.org.nz/>
www.facebook.com/groups/nzrmg/

Above: Locomotive R 112 was seen at Little River in 1921 with Plough van F 5 and five Loco Dept lodging vans; K 421 ex D 125; C 108 hut; K 638 ex D46; K 494 ex F 54; and K 578 built to BP 1873 on an M wagon underframe. It was later reclassified E 804 in 1937 and written off July 1958 at Hillside shops.

The details such as the variety of steps in front of the wagons and the meat safe at the end of the yard hut are fantastic. The hut occupants also seem well dressed for a work train, suggesting this may be holiday accommodation or a Sunday.
Clarrie R Smith, Colin Barry collection





Top: Addington 1921. R 112 leads a work train consisting of K 421 ex Dunedin & Port Chalmers Railway Co. (numbered NZR D 125 in the 1882); C.108 Lodging hut on an M wagon; and the plough van F 5. *Clarrie R Smith, Colin Barry collection*



Left: K 421 become E 794 in 1937 and was captured in use as the Linwood Loco storage van E 794 by Stan Rockliff on the 23rd of November 1940. Its panelled sides are now covered in T&G, but it retains its original 'Tumble home' shape. *S. A. Rockliff*

Below: K 579 at Christchurch in 1906 illustrating the opposite side to that of K578. One of the new sleeping vans built to BP1873, plan K2, this one on an ex D&PCR underframe built by Bristol Car & Waggon Co in 1872. This photo was taken by Ernest Arundel, an Australian seaman / Railway enthusiast, who visited NZ several times during 1906-8. *E. Arundel, John Agnew Collection*

